



YARDSPACE

IVY LODGE

A beautiful castellated lodge & barn set in the grounds
of Cirencester Park



ABOUT

Nestled in the prestigious Cirencester Park, Ivy Lodge offers great food made with exceptional ingredients, cooked over open flames using traditional asado techniques, alongside fire pits and stunning views. A beautiful barn with rustic timbers and a castle-like facade forms the heart of the venue, surrounded by quintessentially English parkland with ancient oaks and the occasional summer polo match.





YARDSPACE

ESSENTIAL INFORMATION

Indoor ceremony capacity:

The Lodge - 139

The Barn - 200

Outdoor ceremony capacity

The Front Lawn - 200

Dining capacity - 144





YARDSPACE

WEDDING PLANNING

We're here to guide you through every step of your wedding journey, making the planning process smooth, stress-free, and enjoyable.

- Support with designing your bespoke wedding, including a tailored quote
- Personal guidance and expert advice throughout the planning process
- A dedicated wedding day coordinator to ensure everything runs perfectly
- Access to our handpicked list of trusted, top-tier suppliers

PRICING & QUOTING

Our user-friendly tool 'Cordero' lets you build a bespoke quote in minutes, offering complete transparency around costs.

- Access to our quote system can be found via our [live availability calendar](#)

CEREMONY

We can seat up to 139 guests in The Lodge









We can seat up to 200
guests on the lawn in
warm & dry weather







DINING

We can seat up to 144 people
in the barn for feasts & 200 for
dancing & drinks



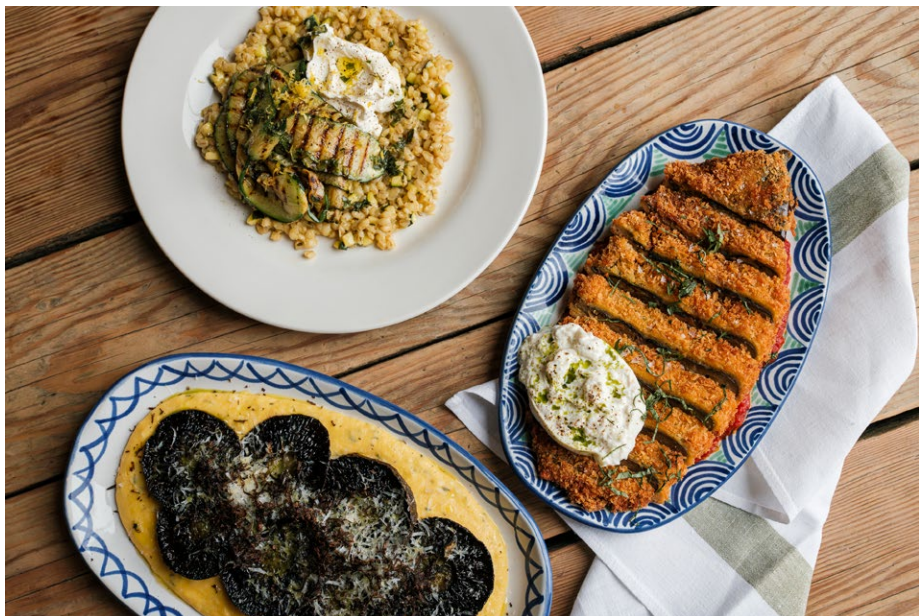
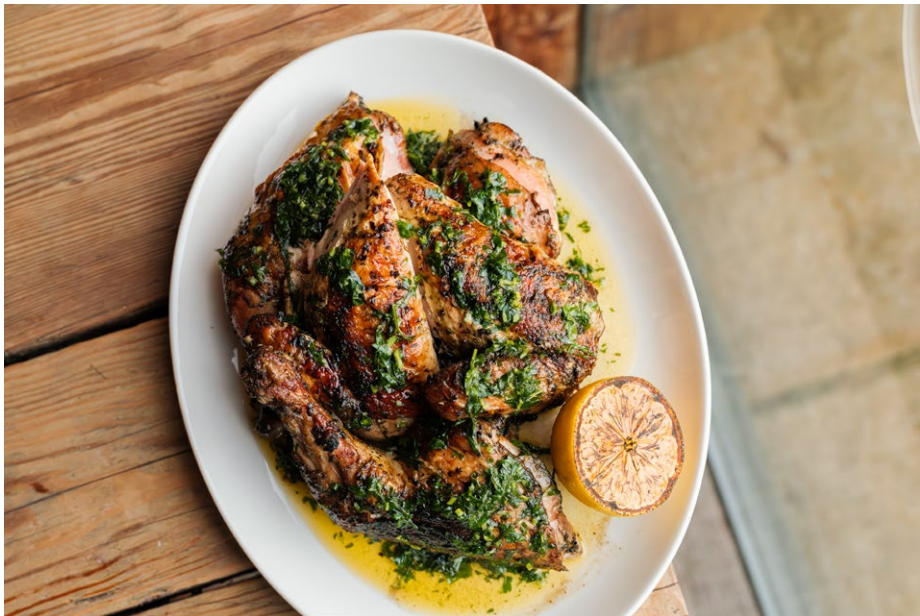


FEAST

We cook feasts on our tailor-made
Asado presenting simple,
memorable dishes .

Please see website for menus & pricing





We buy the best, cook it simply
and serve it generously.





A high-angle, close-up photograph of three sourdough pizzas resting on a rustic wooden surface. The pizzas are arranged in a triangular pattern. The pizza on the left is topped with a thick layer of tomato sauce, melted cheese, sliced mushrooms, arugula, and thin slices of prosciutto, garnished with a dusting of grated cheese. The pizza on the right features a dark, possibly charred or burnt, base with a layer of tomato sauce, melted cheese, and a generous amount of fresh arugula. The pizza at the bottom is a pepperoni pizza with a thick layer of tomato sauce, melted cheese, and several slices of pepperoni, garnished with a few fresh basil leaves. The crusts are thick and slightly charred. In the bottom left corner, a white paper napkin with a circular logo featuring a large 'F' and the word 'BROOKLYN' is partially visible.

Baz and Fred's award-winning
sourdough pizzas.

Please see website for menu

PIAGGIO

Our custom made piaggio is the perfect way to kick start your wedding day.

Serving spritz, cocktails or what ever you fancy!



WINE

Our in-house wine buyers have long-standing relationships with artisan winemakers around Europe. We buy directly from the vineyards, which means excellent value for good quality wine.



Please see website for pricing



COCKTAILS



Margarita

Blanco Tequila, Cointreau,
Lime, Agave



Espresso Martini

Vodka, Coffee Liqueur,
Espresso



Picante

Blanco Tequila, Cointreau,
Lime, Chilli, Agave



Pisco Sour

El Gobernador Pisco,
Lime, Bitters (v)



Passionfruit Martini

Vanilla Vodka,
Passionfruit Liqueur, Purée



Ram's Skull TNT

Blanco Tequila, Triple Sec,
Agave, Tonic & Limes



Dark & Stormy

Spiced Rum, Ginger Beer,
Lime, Bitters



Amaretto Sour

Disaronno, Lemon, Syrup,
Maraschino Cherry (v)



Old Fashioned

Cripps Whisky,
Demerara Sugar, Bitters



Paloma

Blanco Tequila, Grapefruit,
Lime, Agave, Soda



Cripps Negroni

Cripps Gin, Campari,
Punt E Mes



Whiskey Sour

Cripps Whisky,
Lemon, Syrup (v)



Ram's Skull Daiquiri

Aged Rum, Lime,
Syrup



Bramble

Gin, Creme de Meure,
Syrup, Lemon



LOW & NO ALCOHOL

Mocktails



Passionfruit Martini

Cripps Spirit of Vanilla,
Passionfruit Puree, Apple Juice,
Vanilla Syrup



Aperol Spritz

Lyre's Italian Spritz, Non Alc.
Prosecco, Fever-tree
Mediterranean Tonic



Amaretto Sour

Lyre's Amaretto, Lemon Juice,
Sugar Syrup, Seasn 0.0 Bitters



Margarita Picante

Almave Blanco, Lyre's Orange
Sec, Lime Juice, Re'al Agave,
Birdseye Chilli

Tall Drinks



London Dry & Tonic

Cripps Essence of London Dry,
Tonic, Orange Juice, Wedge of
Orange and Juniper Berries



Vanilla Libre

Cripps Spirit of Vanilla,
Coca-Cola, Lime Juice and a
Wedge of Lime



Sparkling Rhubarb, Orange & Ginger

Organic Norfolk Cordial,
Sparkling Water & Slice of
Orange



Sparkling Elderflower & Cucumber

Organic Norfolk Cordial,
Sparkling Water & Ribbons of
Cucumber



The image shows the interior of a rustic pub. A long wooden bar is the central feature, with several wooden stools lined up along its side. Behind the bar, shelves are stocked with various bottles of alcohol. The walls and ceiling are made of dark, weathered wood, with exposed beams and rafters. A doorway in the background leads to another part of the pub. The lighting is warm and intimate, highlighting the textures of the wood.

THE STUMP

• Make yourself at home in the most buzzy pub in Gloucestershire. The Stump has twelve ensuite bedrooms.

The image shows the interior of a rustic dining room. In the center is a large stone fireplace with a black metal firebox containing a fire. Above the fireplace is a wooden mantelpiece with a mounted bull's head. Two cylindrical wall sconces flank the mantel. To the left and right are white shelves filled with various bottles. In the foreground, there are wooden dining tables with leather-upholstered chairs. The tables are set with plates of food, glasses of wine, and lit candles. The overall atmosphere is warm and cozy.

THE NEW INN

The New Inn is a 16th-century coaching inn set in a beautiful sleepy corner of the Cotswolds. The New Inn has 15 luxurious ensuite bedrooms.

Please visit our [online calendar](#) for availability & pricing or [get in touch today](#) to book a viewing .





YARDSPACE

